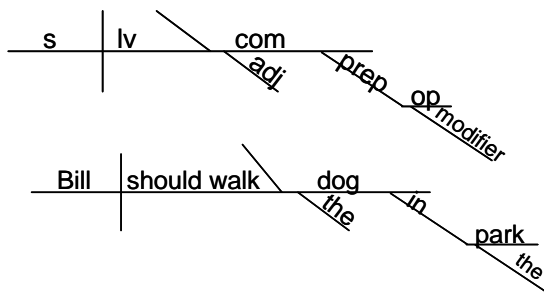
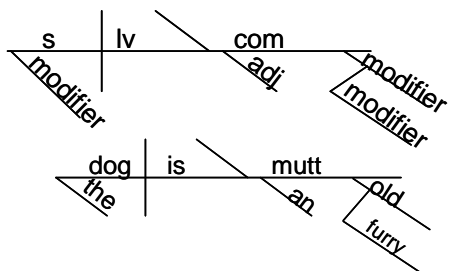
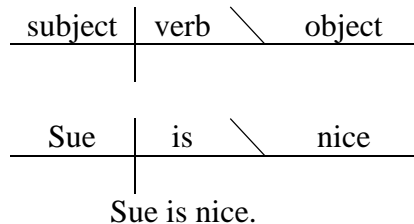
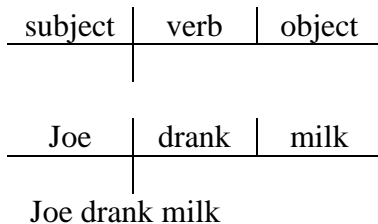
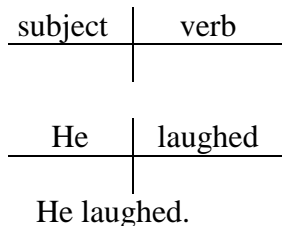


Diagramming

Diagramming sentences is a way for us to break down a sentence into its parts! It helps us to understand how a sentence was constructed or put together - visually.

Each word in a sentence is put into its proper place depending on what function (part) it plays in a sentence. See the examples below.

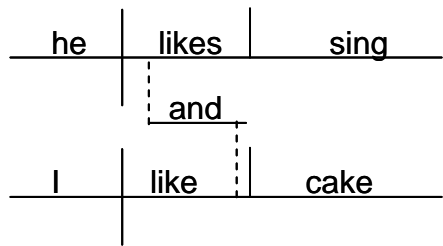
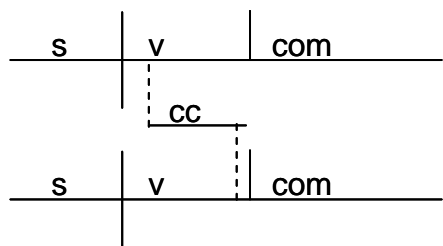
Simple Sentences:



The dog is an old furry mutt.

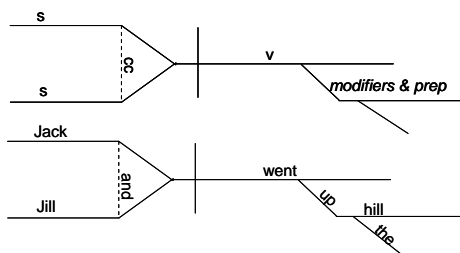
Bill should walk the dog in the park.

Compound Sentences

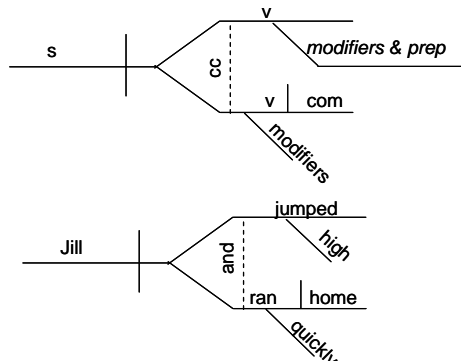


He likes ice cream, and I like cake.

Compound Parts



Jack and Jill went up the hill.



Jill jumped high and ran home quickly